

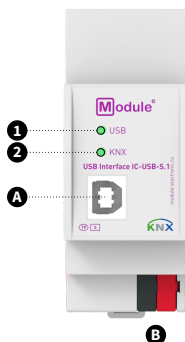
KNX USB INTERFACE

IC-USB-S.1

BASIC INFORMATION

The KNX USB interface provides data transfer between the PC and the KNX bus via USB. Used to configure, monitor, visualize and manage devices on the KNX network.

- Protocol cEMI (Common EMI)
- Supports «RAW Frame» operation mode
- Interface USB 2.0 type B
- LED status indication
- Long telegrams with up to 220 bytes APDU length are supported
- USB and KNX TP galvanic isolation
- Power supply via USB
- Low power consumption
- DIN rail 35mm mounting



- | | |
|------------------|-------------------------|
| A. USB connector | B. KNX TP connector |
| 1. LED state USB | 2. LED bus state KNX TP |

SPECIFICATIONS

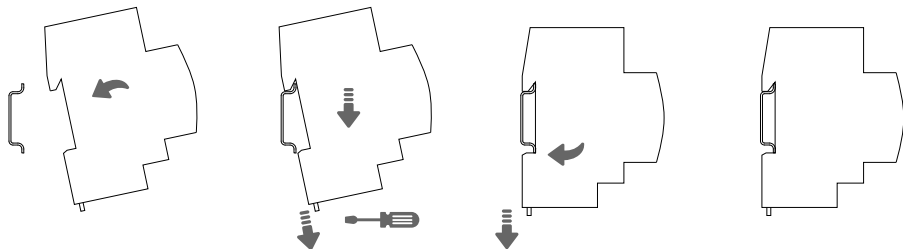
Device model	IC-USB-S.1	
Inputs		
USB connector	USB 2.0 type B, female	
KNX interface		
Specification	TP-256	
Available application software	ETS 4 and later	
KNX connector	4-wire EIB connector (PUSH WIRE spring clips) for standard cable TP1 0,8mm Ø	
Supported protocols	cEMI (Common EMI)	
KNX physical address by default	0.2.255	
Power supply	via USB: 5V DC	
Consumption on the KNX bus (29V DC)	< 5mA	< 150mW
Consumption on the USB (5V DC)	< 20mA	< 100mW
Operation temperature	-5°C ... + 45°C	
Operation humidity	5 ... 95% (no condensation)	
Degree of protection	IP 20, clean environment	
Mounting type	DIN rail 35mm	
Dimensions	36 x 90 x 71mm (2TE)	
Weight	62g	

LED INDICATION

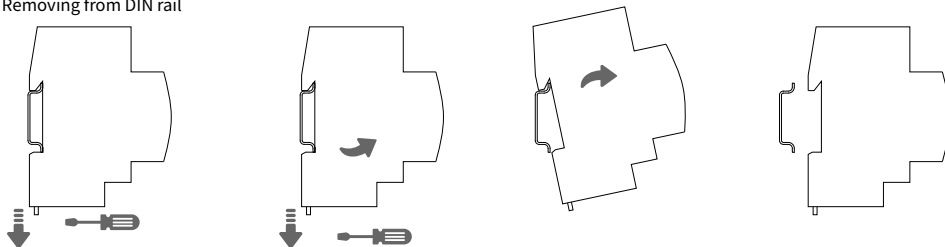
1. State USB	Green: USB connection OK / No telegram traffic Green (blinking): Telegram traffic Red: USB Suspend Mode OFF: No USB connection
2. Bus state KNX TP	Green: KNX TP connection OK / No telegram traffic Green (blinking): Telegram traffic OFF: KNX TP line not connected (or no USB connection)

INSTALLATION

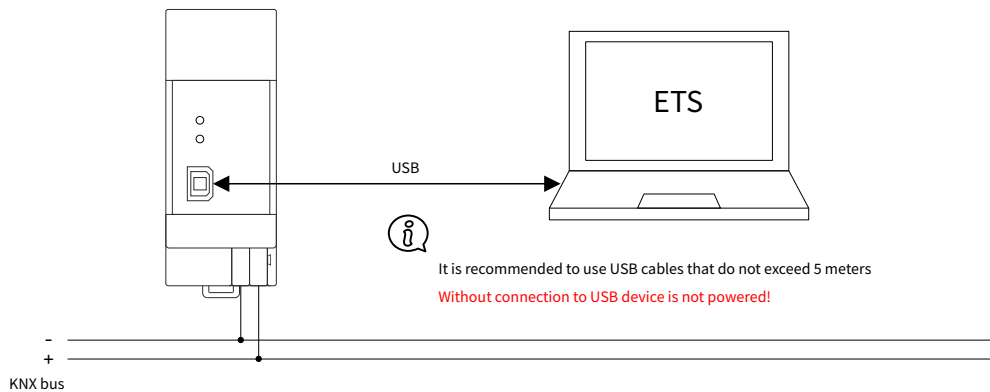
Attaching to DIN rail



Removing from DIN rail



WIRING DIAGRAMS



SAFETY INSTRUCTIONS



ATTENTION! Installation and connection of the device to the mains must only be carried out by qualified personnel! Be sure to turn off the power before installing or removing the device! The design of the device meets the requirements of electrical safety according to GOST 12.2.007.0-75.

SETTING INSTRUCTIONS

The device is set up in accordance with the instruction manual. (The full manual and application program can be downloaded at <https://module-electronic.ru/documents> or by scanning the QR code at the bottom of the document).

TRANSPORTATION, STORAGE AND DISPOSAL

The conditions for the transportation of devices must comply with conditions 5 of GOST 15150-69. Storage of devices in packaging at the warehouses of the manufacturer and consumer must comply with storage conditions 1 in accordance with GOST 15150-69. After transportation or storage at low temperatures, it is necessary to withstand the device at room temperature for at least 2 hours before turning it on. Do not dispose of the device with household waste.

WARRANTY

Warranty period - 12 months from the date of sale to the consumer. The manufacturer is not liable and does not indemnify for damage caused by the fault of the consumer in case of non-compliance with the conditions of transportation, storage, installation and operation, as well as in case of violation of the seal when trying to repair the device yourself.

All the necessary information on the warranty can be obtained by the consumer by calling Module Electronics or on the website: www.module-electronic.ru.

Serial number _____

Date of sale _____

seller's stamp

Seller Signature _____

Name, address of the trading organization _____

User Manual



Made in Russia

module-electronic.ru