

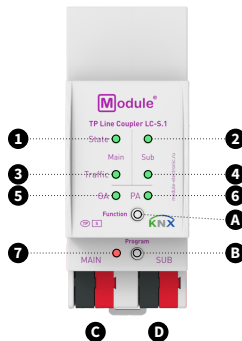
KNX LINE COUPLER

LC-S.1

BASIC INFORMATION

The KNX line coupler provides a bi-directional data connection between two KNX TP lines or areas and works as a KNX network. KNX TP main line and KNX TP subline are coupled having a galvanic isolation in between.

- Various routing filter for group and individual telegrams
- Temporary disabling of routing filter via button
- Long telegrams with up to 240 bytes APDU length are supported
- LED status indication
- Galvanic isolation of connected lines
- Integrated ACK generator
- Power supply via KNX bus
- Low power consumption
- DIN rail 35mm mounting



- A. Function button B. Programming button C. KNX TP main line connector D. KNX TP subline connector
1. LED bus state KNX TP (main line) 2. LED bus state KNX TP (subline) 3. LED telegram traffic KNX TP (main line)
4. LED telegram traffic KNX TP (subline) 5. LED group address routing 6. LED physical address routing
7. Programming LED

SPECIFICATIONS

Device model	LC-S.1	
KNX interfaces (Main, Sub)		
Specification	TP-256	
Available application software	ETS 4 and later	
KNX connector	4-wire EIB connector (PUSH WIRE spring clips) for standard cable TP1 0,8mm Ø	
KNX physical address by default	15.15.0	
Power supply	via KNX bus: 21...30B DC	
Consumption on the KNX bus (29V DC)	< 10mA	< 300mW
Operation temperature	-5°C ... + 45°C	
Operation humidity	5 ... 95% (no condensation)	
Degree of protection	IP 20, clean environment	
Mounting type	DIN rail 35mm	
Dimensions	36 x 90 x 71mm (2TE)	
Weight	62g	

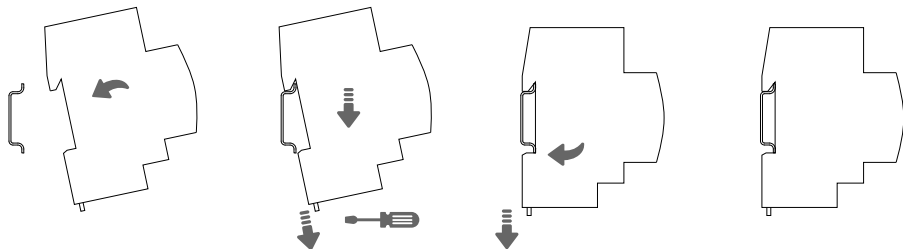
LED INDICATION

1. Bus state KNX TP (main line)	Green: Main line OK Orange: Manual function active
2. Bus state KNX TP (subline)	Green: Subline OK OFF: Subline not connected
3. Telegram traffic KNX TP (main line)	Green (blinking): Telegram traffic Red (blinking): Transmission error OFF: No telegram traffic
4. Telegram traffic KNX TP (subline)	Green (blinking): Telegram traffic Red (blinking): Transmission error OFF: No telegram traffic
5. Group address routing*	Green: Filter table active Orange: Route all Red: Block all OFF: Routing of group telegrams is different on main line and subline
6. Physical address routing	Green: Filter table active Orange: Route all Red: Block all OFF: Routing of physical telegrams is different on main line and subline
7. Programming	Red: Programming mode active OFF: Programming mode not active

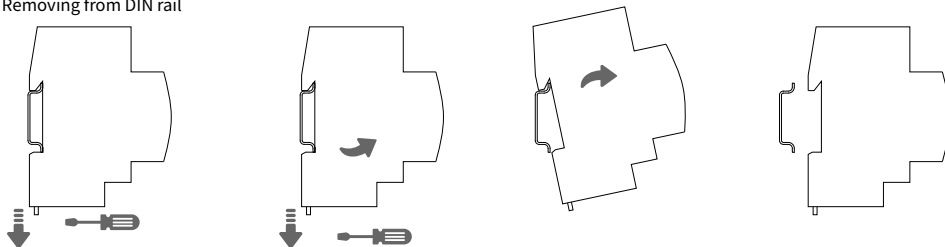
* only group telegrams with main groups 0...13

INSTALLATION

Attaching to DIN rail



Removing from DIN rail



WIRING DIAGRAMS



SAFETY INSTRUCTIONS



ATTENTION! Installation and connection of the device to the mains must only be carried out by qualified personnel! Be sure to turn off the power before installing or removing the device! The design of the device meets the requirements of electrical safety according to GOST 12.2.007.0-75.

SETTING INSTRUCTIONS

The device is set up in accordance with the instruction manual. (The full manual and application program can be downloaded at <https://module-electronic.ru/documents> or by scanning the QR code at the bottom of the document).

TRANSPORTATION, STORAGE AND DISPOSAL

The conditions for the transportation of devices must comply with conditions 5 of GOST 15150-69. Storage of devices in packaging at the warehouses of the manufacturer and consumer must comply with storage conditions 1 in accordance with GOST 15150-69. After transportation or storage at low temperatures, it is necessary to withstand the device at room temperature for at least 2 hours before turning it on. Do not dispose of the device with household waste.

WARRANTY

Warranty period - 12 months from the date of sale to the consumer. The manufacturer is not liable and does not indemnify for damage caused by the fault of the consumer in case of non-compliance with the conditions of transportation, storage, installation and operation, as well as in case of violation of the seal when trying to repair the device yourself.

All the necessary information on the warranty can be obtained by the consumer by calling Module Electronics or on the website: www.module-electronic.ru.

Serial number _____

Date of sale _____

seller's stamp

Seller Signature _____

Name, address of the trading organization _____

User Manual



Made in Russia

module-electronic.ru